

# Volcano Community News

NEWSLETTER #262

JUNE 2011

## Volcano Friends Feeding Friends Notice of Changes

We will no longer serve 4 or 5 hot meals a month. We will be serving 2 hot meals a month instead beginning in June. We will serve on the first Thursday of each month the 4th Thursday of each month which will include the pantry day, and we'll do this until further notice.

We are out of money and energy. We are out of new volunteers. We have all gotten burned out from trying to do it all each and every week. We have a core group of 15 to 20 volunteers that have come in weekly for the last 18 months to help cook, serve and clean up, but we have very few NEW volunteers. We cannot

continue to carry this work load of feeding 200 to 270 people every week.

We want to say a big mahalo to ALL the volunteers that have served and cooked continually for the last 18 months, but we cannot continue to carry most of the work load. We are tired.

If some civic or church group wants to step up and take 1 week per month that would be great! Please contact Donna for information at dmstickel@gmail, or call 985-7140. Once again MAHALO to ALL for ALL your help and well wishes!!

*-Donna Stickel*

## Celebrate Country, Volcano 4th of July Festivities

Summer festivities are coming up. Set up day will be Sunday July 3rd starting at about 2pm, and all activities after that hour at the Center will be cancelled. On Monday the same will hold true, no regular Cooper Center activities.

As us customary we are looking for volunteers in many areas, set up, decorations, parking lot security, take down, clean up, scrip counters, scrip runners, kitchen helpers. If you can help in any of these areas please contact Linda Ugalde at 936-9705 8am to 4pm, or Barbara Toles 769-3903 between 8am and noon Monday through Friday, and we'll put you in touch with people handling all these areas.

If you are an interested food vendor contact Linda. If you are a crafter contact Mary Brewer (see page 5-6 for details). Parade participation details are also on page 5-6. To help with the entertainment or to perform you need to contact Allan Kroll 756-3010.

We hope to see you all at the festivities, come enjoy the Parade, the huge Craft Fair in Carlson's Multipurpose Facility, food, games for keiki, more food, Friends of Hawai'i Volcanoes National Park annual silent auction, and all the entertainment, rain or shine!

*-Linda Ugalde*

## "FADDA'S DAY BLOCK PARTY"

SATURDAY JUNE 18, 2011 COOPER CENTER

Noon till 4:00

Our "First Annual Fadda's Day Block Party" will be held on Saturday, June 18, 2011 at Cooper Center. We will have a few bands for "Dancin' in the Streets"!! We will have food booths for your dining pleasure to include: Local Kine Grindz, Luau Kine Foods, B-B-Q, and Fancy Chef Foods...all serving "out da kitchen door" or eat here at our picnic and dining room areas. There are b-b-q grills available if you wish to bring your own. There will be craft, plants, tools, and electronic tables for you to browse. Hope to have fun activities for the keiki so Mom and Dad can relax or dance.

A Huge..gigantic..humongous SILENT AUCTION will be going on in the Center's great room with more than 90++ items to bid on. We have been collecting and saving stuff for more than 10 months now for you to bid on...win...and enjoy! We have some thing for every one from the gardener to the cook, to the duffer, spa ladies, men's tools, babies, keiki's, and much more!

Since this is our first "Fadda's Day" block party that's for EVERYONE we are looking for more vendors, plant booths,craft.. woodworking...jewelry...knives..baby...spa..massage...jellies... bread...food. tools, and anything you can think of!

Do you get what we are putting out there? This is a BLOCK PARTY for ALL of us! We can eat and dance and shop and hang out with our families and friends...This is YOUR community..at work so PLEASE join us and have some FUN while you are at it!! Volcano is the BEST community on this island!

Interested???? Want to have a table??? please e-mail Barbara Toles @ <bfonseca@hawaii.rr.com to reserve table space. Tables are \$10.00 (cheap) reserved and payable in advance, by 6-12-2011, No refunds please!

FIRST ANNUAL "FADDA'S DAY BLOCK PARTY"  
JUNE 18, 2011.....NOON TO 4:00  
COOPER CENTER, VOLCANO  
BE THERE!!!!

# Volcano Newsletter News & Ads

## NEWS Submissions

**Deadline for the July issue is  
June 10th, 2011**

All e-mail submissions should go to  
Linda Ugalde at **936-9705**  
kilaueatutu@hawaii.rr.com  
*Be sure to include your name!*  
Please include a headline.

**For scheduling at Cooper Center,  
call Barbara at 769-3903, ONLY  
between 8 AM to 12 PM, M-F**

*Volcano Community News is not  
responsible for errors in submitted  
articles. The views expressed in the  
submissions are those of the authors.*

## Advertising

**Pre-Paid** rectangular 1½" high x 2½" wide **PRESS READY** ads cost **\$30 per issue** or **\$162 for 6 months**, and 2½" square ads cost **\$45 per issue**, or **\$243 for 6 months** of **UNCHANGED ads**. **Back page ads are \$55**, and **\$75**, with a **10% discount for 6 months with no changes**. If ads are stopped & restarted, ad graphics must be resent.

We need digital TIFF or PDF files at 300 dpi. We do not set up ads; they must be submitted as digital files. Please contact Linda Ugalde at 936-9705.

Checks for advertising should be made payable to Cooper Center and addressed to:  
Cooper Center Council  
Volcano Community News  
P.O. Box 1000, Volcano, HI  
96785

Printed by Hilo Bay Printing, Co.

## CRIME STATISTICS

APRIL 2011

**Burglary:** Volcano 1/ Puna 15

4-28: Old Volcano Road: Entry into business through unlocked door, nothing removed

**Criminal Property Damage:** Volcano 0/ Puna 28

**Robbery:** Volcano 0/Puna 2

**Theft:** Volcano 1/ Puna 31

4-7: Wright Road: 100' extension cord and 5 light bulbs taken

**Vehicle Theft:** Volcano 0/Puna 3

**Unauthorized Entry into Motor Vehicle:** Volcano 0/ Puna 5

Volcano Neighborhood Watch meets the 3rd Tuesday of the month, at Cooper Center, 6:30 pm. All Volcano neighborhoods are welcome.

### District 6 Matters

**Wednesday, June 29th at 7:00**

**PM: Cooper Center (Volcano)**

Councilmember Brittany Smart will host the District 6 Matters (D6M) meetings with special guest Executive Director of the People's Advocacy for Trails Hawaii (PATH) Laura Dierenfield.

Ms. Dierenfield will be discussing Complete Streets, the Bike Plan Implementation Plan as well as having open dialog on pedestrian and bicycle safety and needed infrastructures. Direct questions and comments are welcome on any subject dealing with pedestrian and bicyclist issues. Light refreshments will be served.

For more information about these meetings, please contact Jenny at district6@co.hawaii.hi.us or call (808) 961-8536.

### July 4 Keiki game volunteers needed!

We are looking for volunteers to help with facepainting, animal balloon twisting, bean bag tossing, and assorted other fun activities for the keiki at the Cooper Center grounds to commence after the 4th of July parade.

The Keiki Committee needs volunteers to help the keiki with these games as well as setup and breakdown. We will supply the supplies, you supply yourself! Teens are welcome to volunteer! Please send Sarah Nash an email: sarcornash@yahoo.com with the subject line as: help for July 4! Leave your name, email, what you want to help with and when you are available as well as a contact phone number. Mahalo!

*-4th Keiki Committee*

### HELPFUL REMINDERS

#### Hours of Operation

	S	M	T	W	T	F	S
<b>Volcano (dump) Transfer Station</b>		6-6			6-6		6-6
<b>Keaau HI 5¢ Recycling</b>	8:30- 3:30*	8:30- 3:30*		8:30- 3:30*		8:30- 3:30*	8:30- 3:30*
<b>Cooper Center Donation Intake</b>	7-10	8-12	8-12	8-12	8-6	8-12	

\*—Closed 1-1:30



# Rainfall

Measured in inches for the month of

**April 2011**

## Volcano G & C C

**3.95 inches**

Data collected by  
Amos Meyers

## Volcano Village

**8.28 inches**

Data collected by  
Jim Bush

## Mauna Loa Estates

**9.38 inches**

Data collected by  
JJ Jasinski

## Ohia Estates

**9.2 inches**

Data collected by  
R. Pierotti

## Royal Hawaiian Estates

**7.17 inches**

Data collected by  
Ter DePuy

## Fern Forest

**10.62 inches**

Data collected by  
Drew Kapp

## N. Glennwood

**12.96 inches**

Data collected by  
Kathy McGonigle

# Trading Post

**SERVICE HELP NEEDED** Got a couple of hours to spare a couple of times a month?? I could really use a few extra people from 3:30 to 5:30 on Thursday after noons. What you or your group would be doing in serving delicious food in a service line to happy smiling neighbors and friends. We usually need 12-15 people per service. Also could use some clean-up and dish help on Thursdays. Need drinks and dessert people to come in and set up and serve.....yeah it takes a lot of people to serve to 200++ people EVERY WEEK! Need preps and cooks during the day on Thursdays. I'm getting tired and could use a vacation...just a couple of days would be great...soooo to all you people and groups that have been thinking about getting involved in the Friends Feeding Friends Project here's your opportunity....come in once a week, once a month, every third week, what eva fits into your schedule...call me: Donna Stickel, Chief Cook and Bottle Washer, VFFF 985-7140

**WANTED/NEEDED:** Deli slicer for Friends Feeding Friends Project. If you've got one sitting around we need it! Drop off at the "Coop" M-F...8-12:00 or call Donna..9857140

**KEYBOARD WANTED:** Rehabilitating musician seeks inexpensive used keyboard. Minimal features needed: touch-sensitivity, volume control, MIDI USB port, and sweet tone. Prefer larger keyboard (88), but small is OK. Call Kersten at 985-701

Lawns Mowed, Free sample cut, References, VOLCANO GOLF COURSE SUBDIVISION ONLY, 747-7131

**WANTED: RELIABLE** yard person for two yards in Volcano. Must have own tools and equipment. Please call 967-7247, between 7 - 8 am or 4 - 6 pm

**WANTED:** printer and copy machine for Cooper Center....asap... mahalo, Donna Stickel. 985-7140. or drop off at the "Coop" any weekday...8-12:00!

**WANTED BAKERS:** The Friends Feeding Friends needs baking help. Twice a month...if you can handle a 'mixer'..please bake some goodies and drop them off at Cooper Center, M-W, 8-12:00 We are feeding 200 people at each seating and we need help. ??? Questions, Donna Stickel, 985-7140

**Please patronize all our advertisers. They make this publication possible!**

## Interdenominational Worship Services

9 AM at the Kilauea Military  
Camp Chapel  
Rev. Bill Keiter, Minister

## Roman Catholic Sunday Mass

11:15 AM at the Kilauea Military  
Camp Chapel  
Fr. Lito Redondo

Note: Persons traveling to and from church services at KMC are not obliged to pay National Park entry fees.

## New Hope Christian Fellowship

Hilo side of Akastuka Orchid  
Farm.  
Sunday Svc. 8:30 AM  
Pastor Ray Glory, Jr. 967-7129

## The Village Church, Assembly of God Volcano

19-4276 Wright Rd.  
Pastor Bob Bruzelius  
238-2812  
Sundays 10 AM  
Wed. 6:30 PM  
All are welcome.

## Society of Friends (Quakers)

Royal Hawaiian Estates  
4 PM 985-7037  
3rd Sunday of each month

## Contemplative Meditation

Ocean-Mirror BCC, which offers Contemplative Meditation classes in Hilo, Pahoā, Kea'au, and Volcano, will offer three NEW events in June and July. Details are at [www.ocean-mirror.org](http://www.ocean-mirror.org) - see Calendar - for registration - sliding scale tax-deductible donation/fee may apply..

**"The Wellness Workshop"**: This workshop is one of the Discernment and Discovery Workshop Series. It will cover the following. a) Personal self-improvement, b) Professional development, c) Interpersonal relationship growth. Our wellness is one of skillful choice, of applied wisdom from our experience in True Awareness. Exercising our wholesome choices creates a more enlightened or transcendent presence in community so we may experience this existence as emancipated from life's phenomena and pathological reactions to stress in crisis. This workshop empowers one with mindfulness, stress management, and a realization of our personal, professional, and social health or wellness. Our wellness transforms our life and our relationships - it manifests as happiness, equanimity, and contentment. Held 18 June 2011 in Volcano.

**"Exploring Meditation Traditions"**, a six week series of presentations by Meditation Tradition Speakers - one speaker per week. The speaker will offer guided meditation and discuss contemplative or meditative practice from their tradition perspective and spiritual experience. We will attempt to have the following traditions represented. (Order depending upon availability of presenters schedule): 1) Indian Raja Yoga Tradition; 2) Tibetan - Buddhist Vajrayana; 3) Hindu - the ancient Varnasrama system of India; 4) Jodo Shinshu (True Pure Land) - Hongwanji Mission; 5) Soto Zen - Buddhist Mahayana; 6) Contemplative Arts. In this six week series we hope to be Open-Mind, Beginner's-Mind - to be inclusive in active listening to broaden our spiritual understanding and experience fully in our interconnectedness with all beings on a spiritual plane in loving-kindness and compassion. We have selected an Island specific set of speakers who are gifted and sound - those speakers who also are inclusive in nature and supportive of individuals having a sincere spiritual practice. Held 25 may through 29 June 2011 in Volcano Cooper Center 5:30-6:30PM.

**"Finding Contentment"**: Meditation Series for New Seekers: This 13 week practice-focused series is for beginning meditators and everyone is invited to attend, in a spirit of openness and inclusion, to experience these spiritual transformative teachings in the Contemplative Arts and the timeless teachings of the ancient Buddhist contemplatives. Awareness is trans-formative, be present in your experience and find contentment in your heart - a new practice oriented series plus a brief talk - free or tax-deductible donation accepted if you wish - email your interest please - register online <http://www.ocean-mirror.org>, limited class size. Held Wednesdays starting 6 July 2011 in Volcano, Kea'au, Hilo - 5:30-6:30PM.

-Remy Snow

## Items Sought for July 4th Silent Auction

Friends of Hawai'i Volcanoes National Park (FHVNP) is now seeking donations of products or services from your business or personal collection for our July 4th Silent Auction. This annual fundraiser is held on Independence Day from 9 a.m. to 11:30 a.m. at Cooper Center. In past years, our silent auctions have included overnight stays at hotels and B&Bs, restaurant gift certificates, adventure tours, golf packages, artwork, jewelry, books, bikes, and more. Your organization or personal contribution will be publicly recognized, and donations are tax deductible to the fullest extent allowed by law. A portion of the funds also benefits Volcano Community Association and Cooper Center. No gift is too small or too big! To donate, call 985-7373 or email [admin@fhvnp.org](mailto:admin@fhvnp.org).

*submitted by Julie Mitchell, FHVNP General Manager*



**VolcanoPC**  
computer sales  
& service

Tom Young  
shop/cell 967-7249  
[tom@volcanopc.com](mailto:tom@volcanopc.com)



drafting & design  
new construction •  
additions •  
remodel •  
967-8299  
Ab Valencia

**hale ki'i**

VOLCANO WINERY

967-7772



**got natives!**

Native plants grown especially for Volcano.

Contact: Zoë 967-8209  
[plantnatives@hawaiiintel.net](mailto:plantnatives@hawaiiintel.net)



**Café Ono**  
AT VOLCANO GARDEN ARTS

**CAFÉ HOURS:**  
TUES - SUN, 11 - 3

**GALLERY HOURS:**  
TUES - SUN, 10 - 4

FRESH HEALTHY FARE,  
DELICIOUS LUNCHES.  
DINE GREEN IN  
OUR BEAUTIFUL  
GARDEN SETTING.  
WE DO CATERING.

985-8979  
[VOLCANOGARDENARTS.COM](http://VOLCANOGARDENARTS.COM)

19-3834 OLD VOLCANO RD • VOLCANO

# Friends of Hawai'i Volcanoes National Park - Hawai'i Volcanoes Institute presents

## HIKE THE KA'U COAST: PUNALU'U TO KAMEHAME *with Jay Robinson*

Saturday, June 4

9:00 AM TO 4:00 PM

\$50 MEMBERS / \$65 NON-MEMBERS

In honor of the American Hiking Society's National Trails Day®, join us for a five-mile round-trip interpretive program along the Ala Kahakai National Historic Trail. The day begins with Shanell Dedman introducing us to the ancient cultural stories and sites at Punalu'u. From there, we'll pass anchialine pools, sea cliffs, and more during a moderately strenuous hike that traverses raw lava fields along a windswept, sun-soaked landscape. The turn-around point is Kamehame, the black sand beach that is a primary nesting site for honu 'ea (hawksbill turtles).

PO Box 653 • Volcano, HI 96785

## SUNDAY WALK IN THE PARK

Sunday, June 12

9:00 AM TO 2:00 PM

This monthly program on second Sundays is aimed at bringing together members of the Friends to share in the park's beautiful trails.

Led by Tim Tunison, this month's four-hour, four-mile round-trip hike will explore the scenery, plants, birds, and geology of the subalpine zone of the Mauna Loa Trail. This moderately strenuous hike has a 1,000' elevation ascent and descent. We'll meet at Kipukapuau (Bird Park) and carpool to the trailhead.

Free to Friends members (though non-members are welcome to join in order to attend).

## VOLUNTEER FOREST RESTORATION PROJECT

Friday, June 24

8:30 AM TO 1:00 PM

Park resource managers are working to rebuild mamane forest to improve habitat and forage quality for endemic forest birds such as 'i'iwi. This month, volunteers are needed to collect and process mamane seeds along the Mauna Loa Strip. After seed collecting, we'll go to the park's native plant nursery for seed pod processing. We'll also learn about the park's native forest restoration program.

Volunteers should be 12+ years and able to hike one mile over uneven terrain. Our goal is a crew of 12 people, and pre-registration is required.

## KEAUHOU BIRD CENTER TOUR *with Jeremy Hodges*

Friday, June 17

9:00 AM TO 11:00 AM

\$20 MEMBERS / \$30 NON-MEMBERS

Join us for this special tour of the Keauhou Bird Conservation Center in Volcano, which isn't open to the general public. See and learn about native birds that the facility houses, including the 'alala (Hawaiian crow), which is extinct in the wild; the palila, a finch-billed honeycreeper found only on the slopes of Mauna Kea; the Maui parrotbill, an insectivorous Hawaiian honeycreeper; and the puaiohi, or small Kaua'i thrush.

Since the tour is during breeding season, we will have a unique chance to see chicks being fed!

985-7373 • WWW.FHVN.P.ORG

## BOONE MORRISON ARCHITECT

967-7512

CUSTOM RESIDENTIAL

COMMERCIAL

HISTORIC RESTORATION

40 -years in Volcano Village

50 of our fine homes built in  
the Volcano area to date

Three decades of satisfied clientele. In Real Estate: Local experience matters! Honest, ethical, intelligent representation.  
Still a Volcano resident since 1986\*  
(\*1983 Hawaii)

India Paige R®

India Paige R® 895-1414

Ask for India, Broker In Charge

Offices in Hilo, Pahoa, Kona.  
934-7600 Hilo Office Ask 4 India  
965-9903 Pahoa Office Ask 4 India  
HomesOfHI@gmail.com  
alohaconstreality.com

## Volcano Pottery Sale

June 11 & 12 10 am – 4 pm

*Birgitta Frazier \* Ron Hanatani  
Emily Herb \* Chiu Leong  
Jamie Stokes \* Carol Yamashita  
Clayton Amemiya \* TR Andrews*

Volcano Art Center, Niaulani  
Campus, Volcano Village  
ryhpottery.com/volcano\_pottery\_sale

## Volcano Art Center JUNE 2011 EVENTS

7/11-22  
Camp  
Likolehua:  
Summer Arts  
for ages 6-17  
Concerts  
at Niaulani Campus  
7:30PM  
6/10 Hot Jazz  
w/Ray Brown Jr  
6/24 Guitar Magic  
w/ Dennis &  
Christy Soares  
& Tiana Jennings

6/5 Encaustics Wax  
Painting w/  
John Matsushita  
6/11 Herb Kane:  
Gods & Goddesses Exhibit  
6/11 Hula Kahiko  
Performance  
w/Keala Ching  
6/18 Pastels Workshop  
w/Patti P Johnson  
6/29 Intro to WordPress  
w/ Brent Norris

For more info., call (808)967-8222  
or visit www.volcanoartcenter.org





## “We’re BAAACK!!”

Coqui season in Volcano is fully underway. Coquis start calling earlier in Volcano makai so control efforts in April and May began there, focusing on some of the bigger, persistent populations with breeding frogs in HOIE and RHE.

These breeding populations have demoralized many of our volunteer Coquistadores in those subdivisions. In spite of all the evenings they donate to the cause, some infestations got out of control and threaten to explode and spread to the rest of Volcano. What is especially discouraging is that a few of these infestations got out of hand because the residents on those properties refused to cooperate with the community-wide effort to maintain natural quiet in Volcano and denied access for volunteers to control frogs on their properties.

So, the Coquistadores are hiring Kim Dillman (formerly Tavares), who is the paid coqui controller in the national park, to lead the control efforts on properties in HOIE and RHE, assisted by volunteers. We are using our much appreciated donations from individuals in the community to compensate Kim for her leadership role. Kim still needs volunteers to help on these stubborn infestations. If you would like to help give Kim a call at 443-4035 or kim@bigislandplants.com. If you would like to make a monetary gift to replenish our depleted donation account, contact your neighborhood coordinator below.

To volunteer your time or report a frog, call your neighborhood coqui coordinator: VGCC, Dennis LaPointe (985-7217); Volcano Village, Tim Tunison (769-7258); MLE and `Ohi`a Estates, John Hoover (985-9906); HOIE, Dan Taylor (967-7155); RHE, Faelyn Jardine (936-6728); Volcanoes National Park and all other locations: Kim Dillman (443-4035).

*submitted by Tim Tunison*

## ke Hana No‘eau, a series of Hawaiian cultural programs sponsored by Hawai‘i Volcanoes National Park and Hawai‘i Natural History Association.

**Wednesday, June 8, 2011, 10:00 a.m. to 12:00 Noon** Lā‘au lapa‘au with cultural practitioner Ka‘ohu Monfort as she shares her knowledge and love of the island’s native plants and how they are used to nourish and heal. See and touch a variety of medicinal plants including kukui, ‘ōlena, ha‘uowī, noni, kī, and guava. Kilauea Visitor Center lānai.

**Wednesday, June 15, 2011 10:00 a.m. to 12:00 Noon** Join 12-time Nā Hoku Hanohano award-winning singer, song writer and producer Kenneth Makuakāne as he shares original songs from his latest albums, The Dash, White Bath Tub, and his first solo album, Makuakāne, and other award-winning compositions. Kilauea Visitor Center lānai.

**Also on Wednesday June 15, 2011** - if you can’t make it to the morning program, join Kenneth Makuakāne in the evening and enjoy Nā Leo Manu, a FREE island music concert from 6:00 p.m. to 8:00 p.m. in the Kilauea Visitor Center auditorium.

**Saturday, June 18, 2011, 9:00 a.m. to 3:00 p.m.** Nā Kapa Pa‘ahana Design your own kapa implements with Kauhane Heloca at the Hawai‘i Volcanoes National Park Environmental Education Center. Materials cost is \$300 to make four (4) implements – i‘e kuku (square beater), hohoa (round beater) and niho ‘oki (shark tooth knife). Space limited to 5 students. Reservations required, call 985-6020 by May 27.

**Friday, June 24, 2011, 6:30 p.m. to 8:00 p.m.** Nā Leo Manu Enjoy an evening of hula and Hawaiian music with Meleana Ulrich-Manuel and Hula Hālau ke ‘Olu Makani o Mauna Loa. This hālau has participated in many competitions, festivals and events throughout the State of Hawai‘i, the mainland and Japan. The goal of the hālau is to perpetuate the Hawaiian culture, protocol and history through song and dance and instill confidence and respect in the dancers.

*-NPS*

## AFTER DARK IN THE PARK

Tuesdays at 7:00 pm in Kilauea Visitor Center Auditorium

**June 14, 2011 – “Nēnē in the Space Age: Satellite Telemetry of Hawai‘i’s Endangered Goose”** After being reduced to less than 30 individuals in the 1950s, Nēnē, the Hawaiian goose, has been restored to much of Hawai‘i through decades of captive breeding, releases into the wild, habitat management, and predator control. As their numbers slowly increased, Nēnē began moving between distant locations used in the past, raising a number of questions. Perhaps most perplexing of all, how did they learn to find the isolated destinations visited by their ancestors? Satellite telemetry is now being used to discover where Nēnē travel outside of Hawai‘i Volcanoes National Park. Join Steven Hess, wildlife biologist with the U.S. Geological Survey’s Pacific Island Ecosystems Research Center, as he presents the most recent findings tracking Nēnē across Hawai‘i Island.

**June 28, 2011 – “Papahānaumokuākea Marine National Monument: From the Mountain to the Sea”** The Papahānaumokuākea Marine National Monument is the single largest conservation area under the U.S. flag and one of the largest marine conservation areas in the world, yet few visitors to Hawai‘i even know of its existence. Join Jennifer Nelson, graduate from the University of Hawaii and summer program educator for Mokupāpapa Discovery Center in Hilo as she takes us on an odyssey through the Northwestern Hawaiian Island Chain. Learn about efforts to protect this marine national monument and the Native Hawaiian cultural connections to the land and sea.

Program co-sponsored by Hawai‘i Natural History Association. For information, call (808)985-6011. Your \$2.00 donation helps to support Park programs. Park Entrance Fees Apply.

*Dean Gallagher, Park Ranger*



## VHC Health Sundays Are Back!

Volcano Health Collaborative is again offering their monthly health information table and Free Blood Pressure checks. Visit VHC on the last Sunday of the month at the Volcano Farmers Market held at Cooper Center from 6:30 to 10:00 am. Come learn about health issues, programs and our latest workshops. Ask questions and let us know what health issues are your concern.

Get information on the Volcano Connections project and sign up to be a member at a special introductory rate! Schedule an intake interview by calling Mary Brewer at 938-

1503 and email at [mbrewer@volcanohealth.org](mailto:mbrewer@volcanohealth.org). Become part of our sustainable village movement to connect members to services and allow our seniors to age in place without leaving their homes and community. This program is for all Greater Volcano citizens not just seniors. All of our Volcano citizens can use help from time to time. We are establishing a "real social network" to assist each other during these challenging times. Come create community with us.

## Mass Transit Community Outreach Campaign!

Transit Operations Administrator, Tom Brown, of Hawaii County Mass Transit Agency, is launching an island wide community outreach campaign in a push to increase public transit ridership and provide affordable transit options in view of rising fuel costs.

The County is currently evaluating existing bus routes and demand for public transport island wide. To help meet Volcano Community transit needs, the County is willing to use Cooper Center as a bus depot to eliminate bus turn around on smaller roads within Volcano Village; provide bicycle racks for residents who would like to ride their bikes to the bus depot; and is exploring covered bicycle hitches (offers rain protection) for residents traveling with bicycles.

The County has already added one double decker bus and two hydrogen buses (silent motors and carbon negative exhaust - H2O) to their fleet. Surveys will be distributed to Volcano residents in June to assess transit needs and demand. Possibilities of an express bus to/from Hilo and additional bus schedules are being discussed.

Please fill out the surveys and share your ideas, comments and suggestions as the County values your input! Let's jump on this opportunity to reduce our carbon footprint and Hele-On!

*Submitted by Anne Lee*

## KMC Happenings

**Sunday \$1.00 Bowling:** Every Sunday, 4:00 – 8:00 pm Bowling Lanes.

**Summer Jam Disco:** Saturday, June 11, 8:00 – 11:00 pm Lava Lounge. Join DJ Erik Strom as he brings the house down! Come in fancy dress, we will be having a competition with the theme being Beach and Ocean. Dressed up contestants pay a \$3 cover charge. \$5 for everyone else.

**Father's Day Brunch:** Sunday, June 19, 7:30 am – 1:00 pm Crater Rim Café. Treat Dad to Honey Glazed Ham, Baked Chicken with Mushroom Sauce, Omelet Station, Breakfast Meats, Home made breads, fresh fruits and more! \$17.50 Adults & \$8.75 Children 6-11 years old.

**Father's Day Chef's "Surf N Turf" Special:** Sunday, June 19, 5:00 – 8:00 pm Crater Rim Café. Featuring Boneless Short Rib Steak, Panko Shrimp, Salad/Potato Bar, and a Beverage, \$14.75 per person.

**"Open House" During June 21 NPS Fee Free Day:** In conjunction with Hawaii Volcanoes National Park "Fee Free Day", come "Experience How KMC Supports America's Troops." All KMC facilities and services, including guestrooms will be available to the general public.

**Lava Lounge "Kilauea Wings Buffet" & "Red Hot Lava Wings" Challenge:** Saturday, June 25. Buffet served from 5:00 -7:00 pm for \$6.95. Enjoy the buffet and you are eligible to sign up for our "Red Hot Lava Wings" Challenge at 7:00 pm. See if you can eat 6 chicken wings doused in our Kilauea Hot Sauce with nothing to drink! Prizes to be given to all participants!

**Bowling League Sign Ups:** Seeking new bowlers for our next league in July. Call the 967-8350 or 967-8352 for details.

KMC is open to all authorized KMC patrons and sponsored guests. Park entrance fees may apply. Call 967-8371 for information.

*-Elene Rizzo-Kuhn*

**FIREPLACE & HOME CENTER**  
256 Kamehameha • Downtown Hilo  
961-5646  
[www.fireplacehawaii.com](http://www.fireplacehawaii.com)

Visit our New Showroom with  
22 Models, from Classic to Contemporary

Ask about the  
30% Tax Credit



Keeping Volcano  
Warm and Dry  
for 30 Years



A Unique "Island-Style" Deli

Open daily From 6am-7pm

808.985.8587

Around the corner from the Volcano Store



**ISLAND DRAFTING  
& SPECIAL INSPECTIONS, LLC**  
NEW • ADDITIONS • AS-BUILTS  
PERMIT PROCESSING SERVICES  
(808)960-1380  
FREE CONSULTATIONS

## Volcano Seniors



### Volcano Seniors June Events

- June 2 Business meeting and board games
- June 9 exercise and games
- June 16 exercise, games and Fathers Day pot luck
- June 23 Line dance and games
- June 30 Line dance and games

The Volcano Seniors had an event filled May. Probate lawyer Paul Booth gave us good tips about planning our estates. Bev and Don Shifflet and Juanita Allen did the line dance they'd presented for the Senior Talent show in Kona. They won first place in the group division! Patrick Inouye, three of his ukulele students and a friend came to play cheerful music for us. The members who went to Casino Day in Kona had a fun time and those who toured the New West Hawaii Center enjoyed their day too. Since there are 5 Thursdays in June we'll line dance for added exercise on the last 2 Thursdays.

Many of the Volcano Seniors come to 3rd Friday Community Recreation night. Area residents of all ages who enjoy playing cards, scrabble or mahjong are invited to come to Cooper Center at 7PM on June 17, it's a fun evening!

For club info. call president

*Bev Shifflet, 985-9115*

## Take part in the 2nd Annual VAC Rain Forest Runs!

It's time to put your feet to the floor, get outside and start on your training for the Volcano Art Center Rain Forest Runs, Saturday, August 20. Whether you are running or walking in the Half Marathon, 10K or 5K, it's time to give those legs a shake and start exercising. The races begin at 7:00am for the Half Marathon, 7:30am 10K, 7:45am 5K and the kids runs at 10:00 am. Get the keiki involved by registering them in the free 100 or 200 yard dash, (1-4 year olds for the 100 yard dash; 5-7 for the 200 yard dash) - sponsored by the Kilauea Lodge. Start/Finish for all events is at the Cooper Center in Volcano Village on Wright Road.

The talented artists of the Volcano Art Center Gallery will be donating their art work as race prizes to the overall male/female winners in all 3 races, plus top 2 male/female for 10 year age divisions in all races. Every piece is a treasure. Military Division awards will be presented to the top male/female of each race by the Kilauea Military Camp.

Music and a BBQ lunch provided by the Rotary Club of Volcano (\$8) will welcome the athletes at the finish line, along with family and friends.

Come join the fun and be part of this annual community fund raiser. To register or volunteer: [www.volcanoartcenter.org](http://www.volcanoartcenter.org), [raceinfo@volcanoartcenter.org](mailto:raceinfo@volcanoartcenter.org) or call: Sharron Faff – Race Director at 967-8240

*-Sharron Faff*

## Congratulations Volcano Seniors and Friends

A group of line dancers—Volcano Seniors & Friends--represented the Volcano Senior Citizens Club at the 2011 Big Island Senior Stars Talent Show winning First Place and \$100 in the Group Performance category.

The talent show was held on April 28th at the Old Kona Airport Main Events Pavilion in Kona. This was the group's first performance together. Group performers included: Juanita Allen, Laureta Kawaloa, Sayoko Understeller, Don Shifflet and Instructor: Bev Shifflet.

Akira Yamamoto represented Volcano Senior Citizens Club in the Individual Performance with a song and dance: Yuyake-Kyoake.

*-Bev Shifflet*

## Volcano Garden Arts Presents...

Friday, June 24th will be Poetry Night at Volcano Garden Arts from 7pm to 9pm. Bring a poem to share written by yourself or someone else. Refreshments will be served. As always this event is free and open to the public.

Don't miss our lovely Father's Day Brunch at Café Ono on Sunday June 19th from 11am to 2pm. Please call for reservations 985-8979. Check out our website: [www.volcanogardenarts.com](http://www.volcanogardenarts.com) for upcoming events including future dinners at Café Ono.

*-VGA*

## The Art of Creativity, Imagination and Inspiration:

Developing your Creative Vision Sat. June 18, 11 am - 5 pm Cost: \$65.00

This class/workshop is about developing YOUR Creative Vision. It will share how to take your image from an ordinary image into an extraordinary photograph. All the pro tricks of the trade, how to coax your camera into "seeing" like you do, how to give your image that extra edge.

This class/workshop will be based at Robert's home in Volcano Village with forays into the beauty of nature that abounds in the area:

Call Robert to register, or for info. 808 345-7179



## Calendar Additions

June 11, Saturday -- 8am to Noon - Swap Meet  
June 13, Monday - 5-6pm, coquistadores  
June 18, Saturday - noon - 4pm, Silent auction and Fadda's Day block party  
June 19, Sunday Father's day  
June 29, Wednesday 7pm, Britney Smart-District 6 Matter

### AVON DELIVERS!!!

Mahalo to our very own Avon Lady, Colleen Aviles. She has been supporting the Friends Feeling Friends Project for over 1 year now. Every holiday she gets together a huge box of Avon products for our less fortunate. Christmas, Valentine's day, Easter, and now Mother's day she comes through each AND every time!!! Mahalo, Colleen, you have brightened sooooo many holiday boxes for sooooo many people! We can't do it without people like Colleen Aviles and YOU!!

This month's drive will be for cleaning products. We need laundry detergent, dish soap, body soap, tooth paste and brushes, (child and adult). All kinds of hygiene products. These are the things they can't buy and cost so much. So, if you can pay it forward and give some of the above, please drop off at Cooper Center, M-F, 8-12:00 and a big MAHALO to one and all!  
Questions?? Donna Stickel, 985-7140

### SWAP MEET AND PANCAKE BREAKFAST

SATURDAY JUNE 11, 2011 @ COOPER CENTER FROM 8:00-1:00

This Month's Swap Meet will feature LAU LAUs in addition to all the pancakes, french toast, biscuits and gravy, smoothies and a host of more ono kine grindz! (Catered by the 'Chef's Table).

All tables are \$10.00, soooo clean out the garage, store room, attic and tool shed...tools always sell fast and furious! It's fun and YOU can make some money.

All table profits go right back to Cooper Center and all food profits go to the Friends Feeding Friends project. SO come on in and sell sell sell!

Questions?? Table space?? call Barbara Toles @ 769-3903 between 8am and noon Monday thru Friday only to reserve now!!!

### Zumba Fitness at Volcano Art Center

Ditch the routine and join the party with the Instructor who brought the CRAZE to Hilo! This Latin inspired, easy to follow, calorie burning, dance fitness party is the best way to party yourself into shape! Starting Saturday, June 4th at 9am! Class will be held every Saturday at 9am and Tuesday at 10am. Price - Drop in: \$5; Pre-paid punch card: 8 classes for \$40, 9th class is FREE! Cards are good for 6 months from purchase date and can be used at ALL Zumba Fitness Classes Instructed by Jami Vezina. For more info on other class locations please visit [www.zumba.com](http://www.zumba.com) or contact Jami at [zumbawithjami@gmail.com](mailto:zumbawithjami@gmail.com) or call 238-2019.

Please bring water and wear breathable cloths and tennis shoes. Be prepared for an hour of fun and a great workout!

-Jami Vezina

### BE A FAN!! (DONATOR)

Cooper Center needs ceiling fans. Yep ... it gets hot here in Volcano, especially in the summer. We have so many groups using the center now that we have a great need.

We need 3 for the 'great room' 1 each for the book and thrift store. They averaging \$120-140.00 each. How'sa about a donation of cash (which we will give a donation receipt for). We really get hot in the afternoons and would appreciate YOU being a FAN of Cooper Center!

Questions?? Donna Stickel, VPCC, 985-7140, or Barbara Toles, OSM CC, 769-3903(between 8am and noon only)

Mahalo to Serge and Gloria King for already being so generous!

-Donna Stickel

### SERVICE HELP NEEDED FRIENDS FEEDIN' FRIENDS

Got a couple of hours you can spare once or twice a month? We could really use a few extra people from 3:30 to 5:30-6:00 on the first and last Thursday of every month.

What you or your service group would be doing is serving delicious hot food to your smiling, happy to get it, neighbors and friends. We usually need 15-20 people per service. Also could help with the clean-up and break down. Need people to serve drinks and desserts. Come in at 3:00 and help set up and plate the desserts and juices.

Yeah it takes a lot of people to serve 200-250 hungry souls a hot meal! Need prep cooks in the morning...10:00-12:00 or so. Need people to help set up the "pantry day food for all" on the last Thursday of the month.

We are getting tired and could all use a vacation or just a few days off. This has turned into a forty hour week for a few core people. Soooo to all you people, civic, and church groups who have been thinking of getting involved...now's your chance!! Mahalo in advance!

Donna Stickel, Chief Cook and Bottle Washer!!, VFFF 985.7140

Barbara Toles, *Every Thing Else!!*, VFFF 769-3903 (call between 8am and noon only)-VFFF

### NOW ACCEPTING NEW PATIENTS: LAUREN ALDERDICE, FAMILY NURSE PRACTITIONER

Caring for patients with High Blood Pressure, Diabetes, COPD, Asthma, & more!  
Offering Women's Health & Family Planning Services

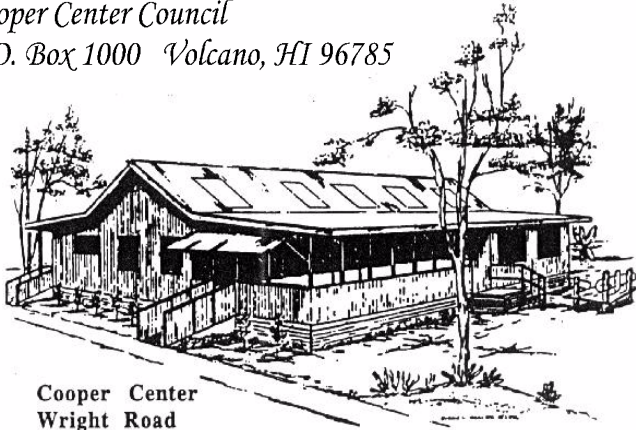
Working in collaboration with  
Dr. Lynda Dolan and Dr. Laurie Hopman  
Accepting HMA-Summerlin, HMSA HMO & PPO,  
UHA, MDX insurance

THE FAMILY MEDICINE CENTER  
409 Kilauea Avenue Hilo, Hawaii 96720  
Ph: (808) 933-9187

# Volcano Community News

Cooper Center Council

P.O. Box 1000 Volcano, HI 96785

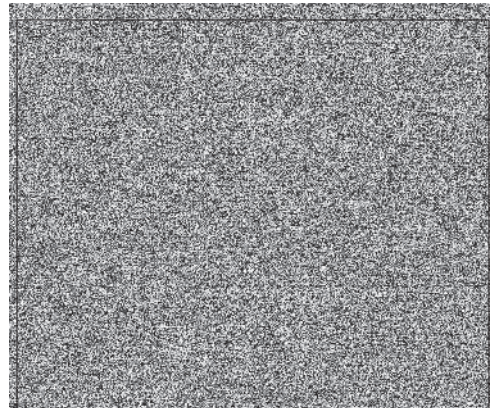
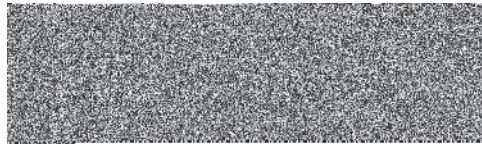


Cooper Center  
Wright Road

Non-Profit Org  
U. S. Postage  
Paid  
Permit No. 12  
Volcano, HI  
96785

\*\*\*\*\*CART-RT SORT \*\*WSS POB

RESIDENT  
P.O. BOXHOLDER  
VOLCANO, HI 96785



**New List!**  
near "Oceanfront"  
Pepeekeo Point, 2 acres  
\$303,000

If God can change  
a caterpillar into a  
butterfly, He can  
surely change  
your life.  
**Experience metamorphosis!**

Join us Sundays  
at 8:30 a.m.

New Hope  
Christian Fellowship Volcano  
967-7129